

Introducing...



Michael Williams
General Manager – SA/NSW

I was recently appointed as the new General Manager for SA/NSW in April 2011.

My areas of responsibility are quite geographically wide and include the Birkenhead Operations, Angaston Operations, Klein Point Quarry on the Yorke Peninsula, the limestone transport ship *MV Accolade II*, the smaller satellite quarries at Birdwood, Moculta, Truro, Rapid Bay and Blanchetown, the fly ash collection plant at Port Augusta Power Station, the Morgan Cement clinker grinding facility at Port Kembla and a fly ash collection plant at the Vales Point Power Station north of Sydney.

I joined Adelaide Brighton 10 years ago at the Angaston plant, initially as the Production Manager and then the Plant Manager. Prior to joining ABC I spent 19 years working for BHP Billiton in various locations from Japan to Port Hedland in Western Australia. I have a strong safety and environmental background, having worked in complex and hazardous plants close to local communities and sensitive environmental areas.

I am looking forward to building on the many environmental improvements that our great teams have implemented at our operations. My focus will be on identifying the root of environmental concerns such as noise and dust and developing viable solutions to reduce these impacts. My commitment to each of our local communities is to ensure that our site management teams listen to feedback and deliver real outcomes for the community.

Michael Williams

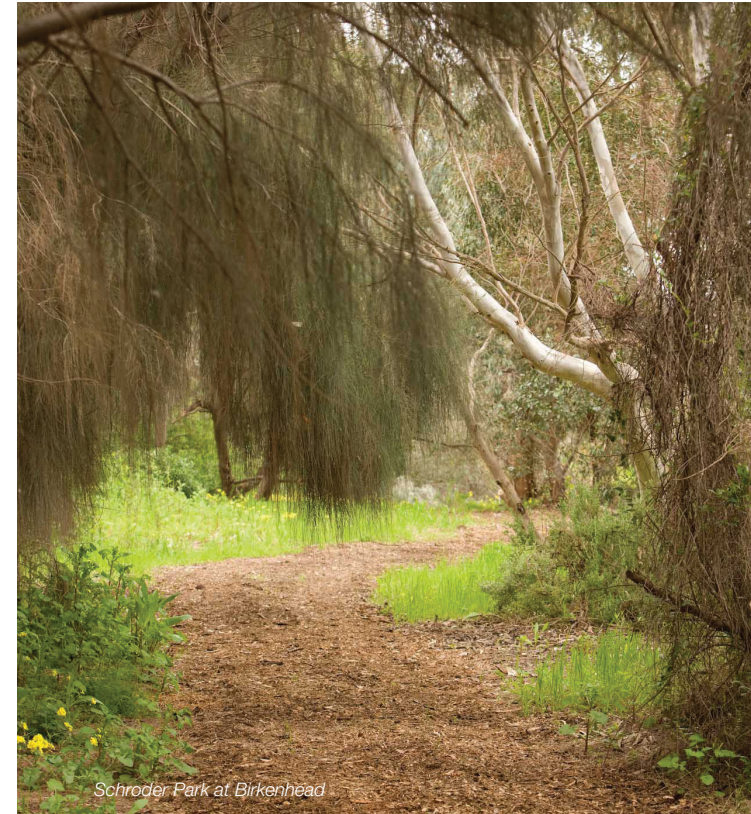
Community Liaison Group

The views of local residents are important to ABC. The Birkenhead plant has engaged with the community through a residents group in different forms over the past 20 years.

Our Community Liaison Group (CLG) is a committee structure chaired by an independent Chairperson. It is comprised of representatives from the local community, staff and elected member of Council, the EPA and ABC.

Topics covered by the CLG include future plans and ongoing issues such as environmental management improvements.

The CLG meets quarterly in the City of Port Adelaide Enfield Town Hall and is open to visitor attendance and participation. Meeting dates are advertised the week prior in the Portside Messenger. The next meeting is scheduled for Monday 5 September 2011.



Schroder Park at Birkenhead

Schroder Park open to visitors

If you're a twitcher, a gardener or perhaps have an interest in ecology and the natural environment, Birkenhead's Schroder Park Wetland is a great place to visit.

The primary purpose of the park is to capture and recycle storm water run off from the site. A comprehensive storm water capturing system ensures that storm water run off from the adjacent pre-blending shed, site paths and pavements is diverted into the park wetlands. Here it is purified through a variety of natural processes including sedimentation and nutrient uptake by local reed species.

By planting the wetland with indigenous plant species an ideal habitat has been created for native wildlife, which is flourishing in the area.

There are a variety of birds, reptiles, insects and aquatic life, including many local frog species, which is a testament to the health of the wetland.

The local community has played a significant role in the development of the wetland and has maintained their involvement through a maintenance and water quality-testing program.

This wetland is a great example of industry working in harmony with and enhancing the natural environment.

To visit the wetland please book through ABC on 8300 0300.

ABC Vacation Program: Not just for the holidays

Many university students will sign up for a retail or hospitality job over the summer holidays, but ABC's Vacation Program could lead to a full-time position straight after graduation.

Through an arrangement with the University of Adelaide, third and fourth year engineering students are selected through a recruitment process to join the company as a full-time employee over the summer university break.

Operations Manager Vince Aurora says students are involved in all aspects of daily operations and given insight into how an organisation the size of ABC functions.

"It's a great preparation tool for real work as the training programs are quite specific and targeted to meet the needs of business and develop the student's skills. Most students find the experience invaluable," he said.

"Our current Projects Engineer, Felicity Lloyd, took part in the Program and completed her placement at the Angaston plant.

"She then signed up for ABC's Graduate Program and has since progressed to her current role at the Birkenhead plant."

Birkenhead plant tours are staged throughout the year for students from schools and Technical Colleges around South Australia.

Seven students participated in the ABC Vacation Program during the 2010/2011 summer break at the Birkenhead and Angaston plants.



Projects Engineer Felicity Lloyd completed our Graduate Program

Isobel Redmond visits Birkenhead

ABC had the opportunity to showcase its business and environmental credentials to the Opposition during a visit to the Birkenhead plant by Liberal Leader Isobel Redmond, Deputy Opposition Leader Mitch Williams and Deputy Leader in the Legislative Council, Michelle Lensink.



We provided our guests with a detailed look at the way alternative fuels are being used for production to ensure the cement making process is cost effective and environmentally friendly.

We demonstrated to Ms Remond the use of the alternative fuel, which results in the diversion of around 130,000 tonnes of demolition waste from landfill each year.

Recycled construction and demolition waste allows us to reduce our reliance on natural gas and minimise greenhouse gas emissions.

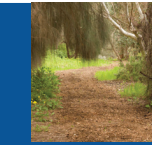


Birkenhead

community news



2 Water Efficiency Team improving our water conservation legacy



3 Schroder Park open to visitors



4 Who do we support in our community?



6 ABC vacation program not just for the holidays

Welcome to Birkenhead Community News

My name is Vince Aurora and I am the Operations Manager at Birkenhead. I began my current role just over a year ago, but I started with Adelaide Brighton Cement (ABC) here in Birkenhead more than 20 years ago.



Vince Aurora Operations Manager Birkenhead

I first worked as a kiln burner, then in various roles as a shift chemist, team leader and Plant Manager with the kiln improvement team. Over time I have seen this locality adapt to a growing population and increasing demand for product from the industry in this area.

As you know we are also looking to expand the business, not in size, but in capacity.

Some of you might wonder what this means, especially in light of recent media regarding the proposed Newport Quays development and the perceived environmental and health impacts from industry, particularly ABC.

I would like to point out that we operate under licence conditions set out by the Environmental Protection Authority (EPA). To breach these conditions would incur significant penalties. Our operating licence has been issued because our operations do not present a hazard to human health.

Continued on page 2...

Birkenhead expansion

Many of you will already be aware of ABC's announcement regarding the proposed expansion of cement milling capacity at Birkenhead.

We plan to install a third cement mill, which is not a stack or a chimney. It is an industrial size grinder used to grind clinker made in the kiln into cement.

The project is estimated to cost \$40-\$50 million and will be built on the eastern side of the Birkenhead plant in between existing infrastructure so the expansion will not be visible from Victoria Road or the Port River.

The expansion will ensure we maintain capacity to service future demand in South Australia and fulfil the substantial Victorian export market.

There is also an environmental benefit. The extra cement milling capacity will allow the Birkenhead plant to manufacture cement

using other cementitious materials (by-product from other industry) in place of the primary cement material manufactured through the kiln process.

This will improve our total carbon footprint, reduce our use of natural resources and respond to the growing demand in the market place to produce a 'green' cement product.

If the expansion meets all the necessary approvals, we expect construction to start in 2012 and to be completed around 2014.

Community consultation on this project is ongoing through our Community Liaison Group (CLG).

If you would like to participate in the CLG or receive environmental updates, please contact Sharon Finney from the Environmental Protection Authority at: sharon.finney@epa.sa.gov.au or call **(08) 8204 9068**.



Adelaide Brighton Cement Ltd
ACN 96 007 870 199
62 Elder Road
Birkenhead
South Australia 5015
Tel: (08) 8300 0300
Fax: (08) 8300 0436
adelaidebrighton@adbri.com.au
www.adbri.com.au

Water Efficiency Team improving our water conservation legacy

A new water conservation initiative at the Birkenhead plant has delivered great results, reducing water usage on site by around 14,000 kilolitres a year – enough water to service 100 households for 12 months.

The initiative began in March 2010 after South Australia's Water Business Sustainability Group was commissioned to conduct an audit on water usage at the Plant.

To help implement findings from the audit, the Water Efficiency Team (WET) was formed by a group of operational staff and engineers dedicated to improving water saving techniques on site.

Auditors and WET identified areas where water usage could be more efficient, including during distribution, operational processes and truck washes. They also looked at opportunities for collection ponds, irrigation, metering and data logging and water recycling.

So far WET has replaced solenoid valves on all cooling towers, repaired minor leaks identified through a data logging process and reprogrammed a large compressor to operate more efficiently.

However, the biggest challenge in water conservation is the accurate assessment and measurement of water usage on site from all major sources.

We are currently installing sub-meters in key locations to measure water usage in real time. The information will feed directly into online databases, enabling us to more accurately identify areas to create and implement water saving initiatives.



Compliance Manager Tim Radimissis and Reliability Engineer Hao Nguyen at Birkenhead

Welcome to Birkenhead Community News continued...

Independent air quality consultants are employed to monitor and assess our stack emissions. Emissions from ABC's Birkenhead Plant comply with all licence conditions. In addition, modelling of stack emissions by independent air quality consultants shows that emissions from the Birkenhead plant do not exceed relevant EPA and World Health Organisation guidelines for health.

To help improve our operations and reduce the impact we have on the local environment we regularly engage with our Community Liaison Group, which includes local residents, representatives from local and state government departments and ABC employees.

It is important to recognise that the LeFevre Peninsula is an industrial area and as such there are many factors contributing to air pollution, including traffic and transport activities.

Another matter I would like to address is the perception we "ramp up" production at night. To do this would be counter-productive and expensive.

The most efficient means of operating a clinker kiln is at a steady continuous state at all times. This is a standard operating procedure followed by all production personnel at Birkenhead.

What might be observed as a change of emissions from the kiln stack at night is the difference in the exhaust gas temperature and the ambient air temperature.

I would encourage you to read further and discover what we are doing to ensure a more environmentally sustainable operation.

Vince Aurora
Operations Manager – Birkenhead

Car wash policy

Following recent requests, we are taking the opportunity to republish our policy in relation to car washing.

If a resident believes the Birkenhead plant is the sole contributor to dust collection, or damage to their vehicle, they should follow the procedure detailed below:

The resident should bring their vehicle to the Birkenhead plant for inspection (and to potentially provide a sample of the material) by an authorised Birkenhead officer. It is imperative that this inspection is completed as close to the time of the alleged incident as possible to allow ABC to undertake appropriate investigations.

The decision of providing a car wash token will be made once the vehicle has been inspected and if the Birkenhead officer considers the car has been affected due to an unforeseen plant upset or event.

If a resident is refused a car wash token, but still believes the Birkenhead plant caused soiling of their vehicle, then the resident should provide the company with a written notice for further review.

Birkenhead officers who have the authority to inspect vehicles and decide whether it is appropriate to issue a car wash token are the Birkenhead Operations Manager, Birkenhead Health, Safety and Environment Manager and the Adelaide Brighton Ltd Group Health, Safety and Compliance Manager.

Who do we support in our community?

We congratulate local resident Jessica Molsher and her team on winning silver in the under 23 World Rowing Championships. With ABC's support Jessica was able to compete in the 2010 event in Brest, Belarus.

Other sponsorships include:

West Lakes & Districts Little Athletics Centre

Port Adelaide Softball Club

Kura Yerlo Council Inc

Australian Lions Children's Mobility Foundation

Largs North Calisthenics

Port Community Arts Centre

Semaphore Music Festival

United Nations Youth Association – Youth Conference

United Care Wesley Port Adelaide

Semaphore Street Fair 28 November 2010

Kmart Christmas Tree for the Salvation Army

Port Adelaide/Enfield Christmas Parade



Silver medalists Jessica Molsher (left) with crew and coach



ABC's Raelene Bennetts and Karen Dejong with gifts for United Care Wesley and Salvation Army in Port Adelaide

Energy efficiency opportunities

ABC's energy efficiency program has been heralded a success after a rigorous two-day government audit.

Conducted by the Federal Department of Resource, Energy and Tourism, the audit provided a detailed analysis of energy usage on site, including metering and monitoring.

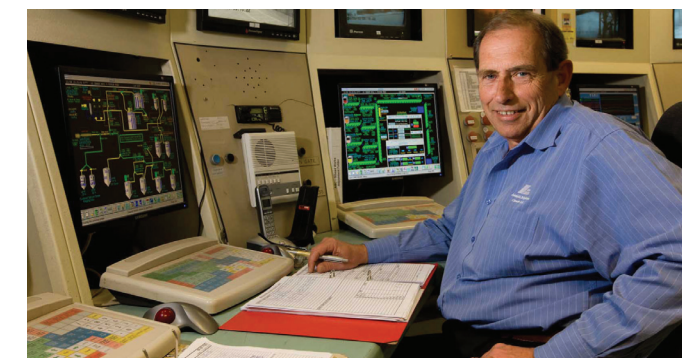
ABC was found to be compliant in all aspects of energy use and management and auditors were impressed by our enthusiasm for energy efficiency opportunities.

We have been running an energy efficiency program for the past three years, as part of an initiative to improve the environmental and commercial aspect of our operations.

As cement plants consume large amounts of energy for production, we are constantly seeking to reduce our environmental footprint and the associated costs of energy use wherever possible.

We have several major projects in the pipeline, which will further reduce our energy use and reliance on natural gas, including

modifying the way we transport recycled construction and demolition waste to the process by using a conveyor belt instead of pneumatically transporting the fuel through a pipe.



Technical Manager Paul Heggen monitoring operations

Environmental Improvement Plan update

Item	Title	Description	Potential Benefits	Timing	Comment
1	Ascertain whether ABC is responsible for vibrations in the community	Undertake a study associated with Vibration	Potential to reduce vibration affects in the community	2011	Final report received by external consultant – 2011. Outcomes assessed & communicated to CLG/individually concerned residents. Ongoing monitoring/communications.
2	Alternative Fuels and Raw Materials	Develop a plan to introduce further future Alternative Fuels and Raw Materials	Reduce costs and use of natural resources, Sustainability, G.H.G and reduce CO2	Ongoing 2008-2011	Produce a plan and identify actions by March 2009. Planning for change over to utilise black sand as iron source in raw material mix from Port Pirie. Also the use of recycled foundry sand as silica source in raw material mix.
3	Recycling program	Develop a plant recycling program and implement actions	Reuse of recycled materials to reduce landfill thereby reduce CO2	Ongoing 2008-2011	Produce plan and implement actions. Currently recycling cement kiln dust through Angaston plant with the view to reintroduce cement kiln dust at Birkenhead.
4	Demolition projects	Develop a demolition plan for the Plant. Implement actions	Improve Plant work environment, remove asbestos sheeting	Q 2 2009 Q 4 2009 Q 2 2010	Produce plan by Feb 2009 Specific area identified include: 2 old slurry silos; old kiln dust collector shed COMPLETE
5	Noise reduction	Develop a plant noise reduction program and implement actions as identified	Reduction of noise into the community	Ongoing 2008-2011	Assess results from noise surveys conducted and developed a Birkenhead Plant noise reduction program – EPA approved. Implement noise reduction program actions by 31st December 2011
6	Cladding of buildings	Clad identified areas of buildings within the Plant	Reduction of fugitive dust from buildings	2010	COMPLETE
7	Upgrade Raw Materials handling areas	Install bunds and sprinkler system for raw materials by Material In-loading Facility	Reduce environmental impacts due to truck movements within the plant	Q 4 2008	COMPLETE
8	Paving and greening	Paving and or greening of unsealed areas around the Plant	Reduction in fugitive dust from plant and beautification	2011	Specific areas include: south/east of CM1 Clinker shed and Contractor Area
9	Replace Gantry Walls	North East side Gantry Walls replacement	Reduce dust from north end Gantry	2010	COMPLETE
10	Install Truck Wash Facilities	Facility to be installed north end of Plant to clean cement tankers	Reduce fugitive dust from cement tankers	2010	By September 30th 2011 the facility to be installed on Elder Rd, north of current weighbridge
11	Reduce visual impact along riverfront and bridges	Planting and screening to be undertaken	Reduction in visual impact along riverfront and bridges	2011	New yearly partnering agreements with gardening and landscaping contractors to address issues, including planting, screening and maintenance.
12	Power and water savings	Identify power and water saving initiatives. Implement actions where appropriate	Savings in costs, reduction in the use of natural resources, sustainability and G.H.G.	Ongoing 2008-2011	BY 31 December 2011 identify power saving initiatives and implement actions as highlighted through site-wide power efficiency and water audit
13	Cement Mill 1 raw material system handling upgrade	Relocate cement mill 1 raw materials handling system and upgrade	Eliminate fugitive dust from handling of raw materials	2011	Previous submission dependant on cement mill 2 project. A new proposal is currently being investigated that focuses on simplifying the materials handling aspect. This will require CAPEX funds but a significantly lower costs.

Progress has commenced on the new three yearly Environmental Improvement Program (EIP). The EIP is developed in consultation with the Community Liaison Group, the EPA and ABC and is scheduled to be completed by 31 December 2011.

EPA register – do you want to know what fuels are being tested at Birkenhead?

To remain both environmentally sustainable and market competitive, ABC is constantly investigating opportunities to reduce energy consumption and the feasibility of using alternative raw feed materials in cement production.

To assess the effectiveness of these materials, the Birkenhead plant and the EPA have a process to test the materials, tabling the results for EPA assessment.

This is to ensure that all alternative materials to be used in cement making are compliant with current regulations.

The CLG has requested the EPA keep a contact list of local residents who would like information regarding the results of these trials.

If you would like to register your interest and receive regular updates please contact Sharon Finney at sharon.finney@epa.sa.gov.au or call (08) 8204 9068.

Or write to:

Sharon Finney
Senior Environment Protection Officer
Environment Protection Authority
Regulation and Compliance Division
GPO Box 2607
Adelaide SA 5001